

# Trax Trip to Marrangaroo Campground and Surrounds

12 to 13<sup>th</sup> August 2023

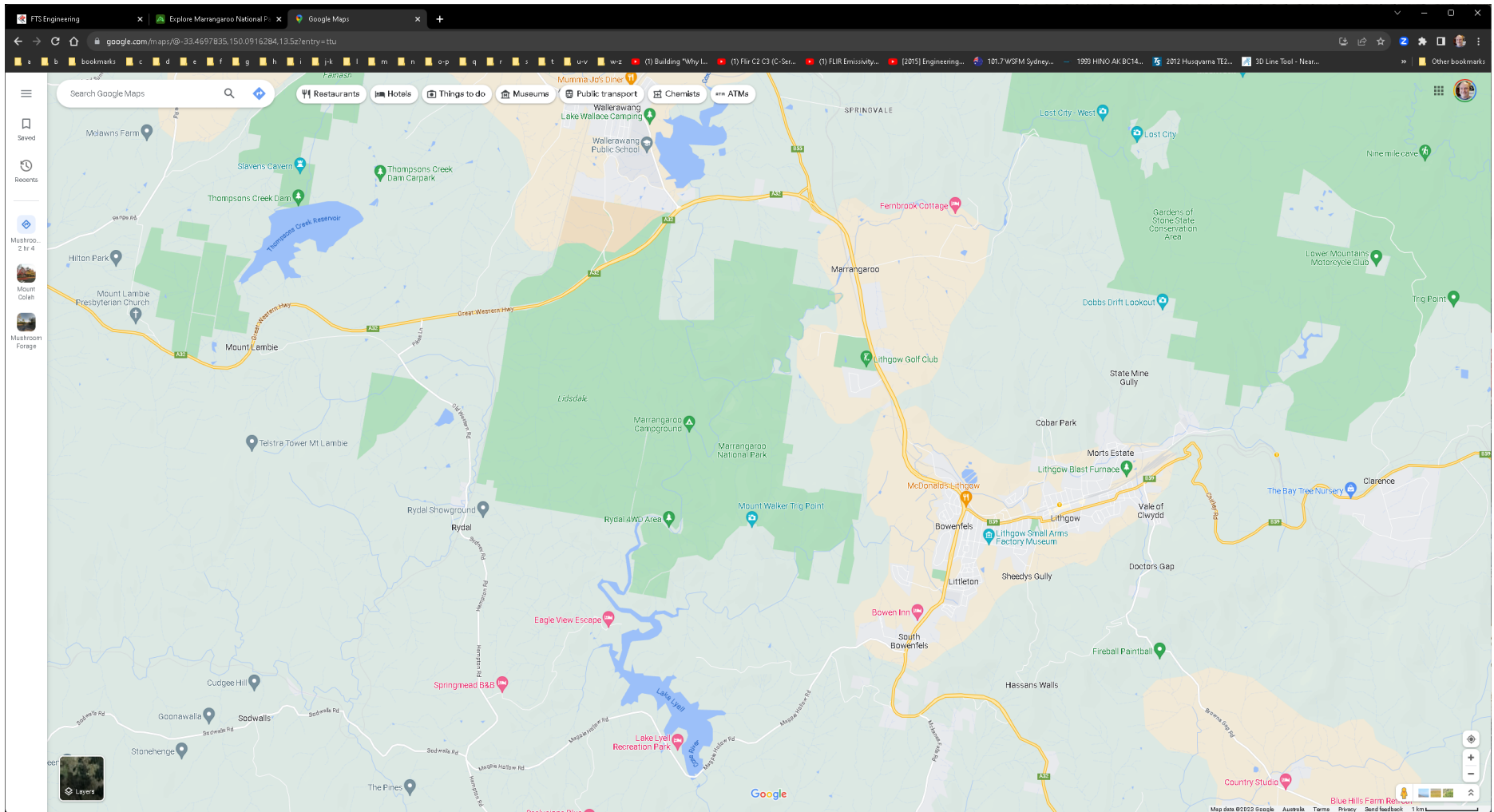
Trip Leader – Daniel Lee 0431 201 421

General information from websites listed below:

[https://www.australia247.info/explore/new\\_south\\_wales/lithgow\\_city\\_council/marrangaroo/marrangaroo-national-park.html](https://www.australia247.info/explore/new_south_wales/lithgow_city_council/marrangaroo/marrangaroo-national-park.html)

<https://wikicamps.com.au/site/New%2BSouth%2BWales%2B%252F%2BACT/Campground/Marrangaroo+Camp+Ground/59149>

<https://www.nationalparks.nsw.gov.au/camping-and-accommodation/campgrounds/marrangaroo-campground>



## Trip Route:

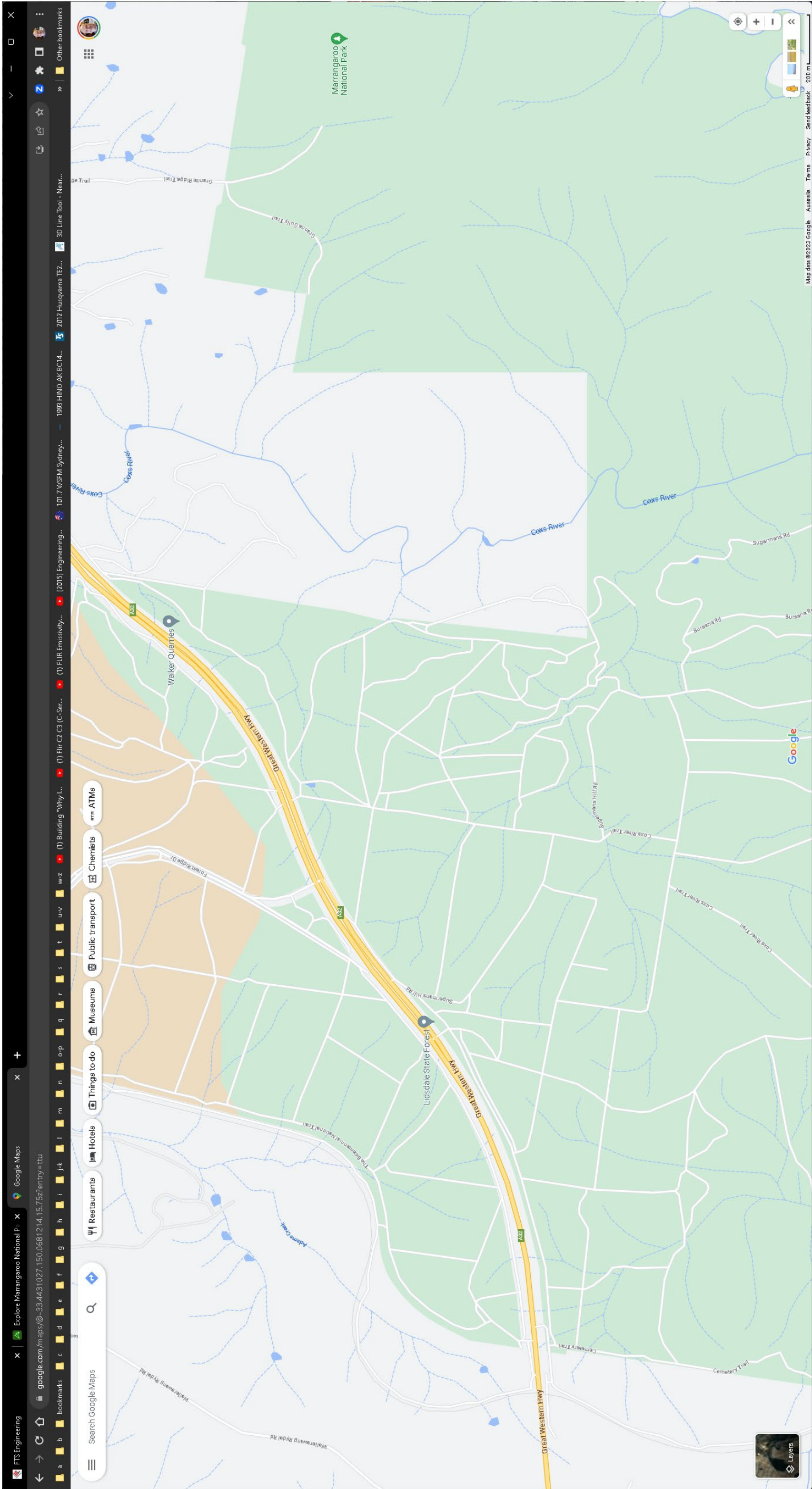
Meet at McDonalds Richmond Cnr March & Eastmarket Streets, at 10 am to have morning tea. Depart 11 am to drive Bells Line of Road stopping at Mount Tomah Walls Lookout around 11:45 to 12:00 enroute to see the sharp valleys then head to Lithgow arriving around 12:30 pm. Collect any supplies needed in Lithgow and head off to find our camp site.

Set up camp early in the afternoon before it gets cold, relax and plan the following days activities – as I do not know the area and/or each persons/vehicles capabilities or aspirations in terms of being adventurous. It is a get to know you week end! Sunday is a day of exploring the area, some areas are more difficult than others and there are some creek crossings.

Last time I was in the area was Easter 2011.... I lived in Qld then.... and we got lost then in the 4WD area trying for find our way back to the highway. My previous Patrol in the shots.



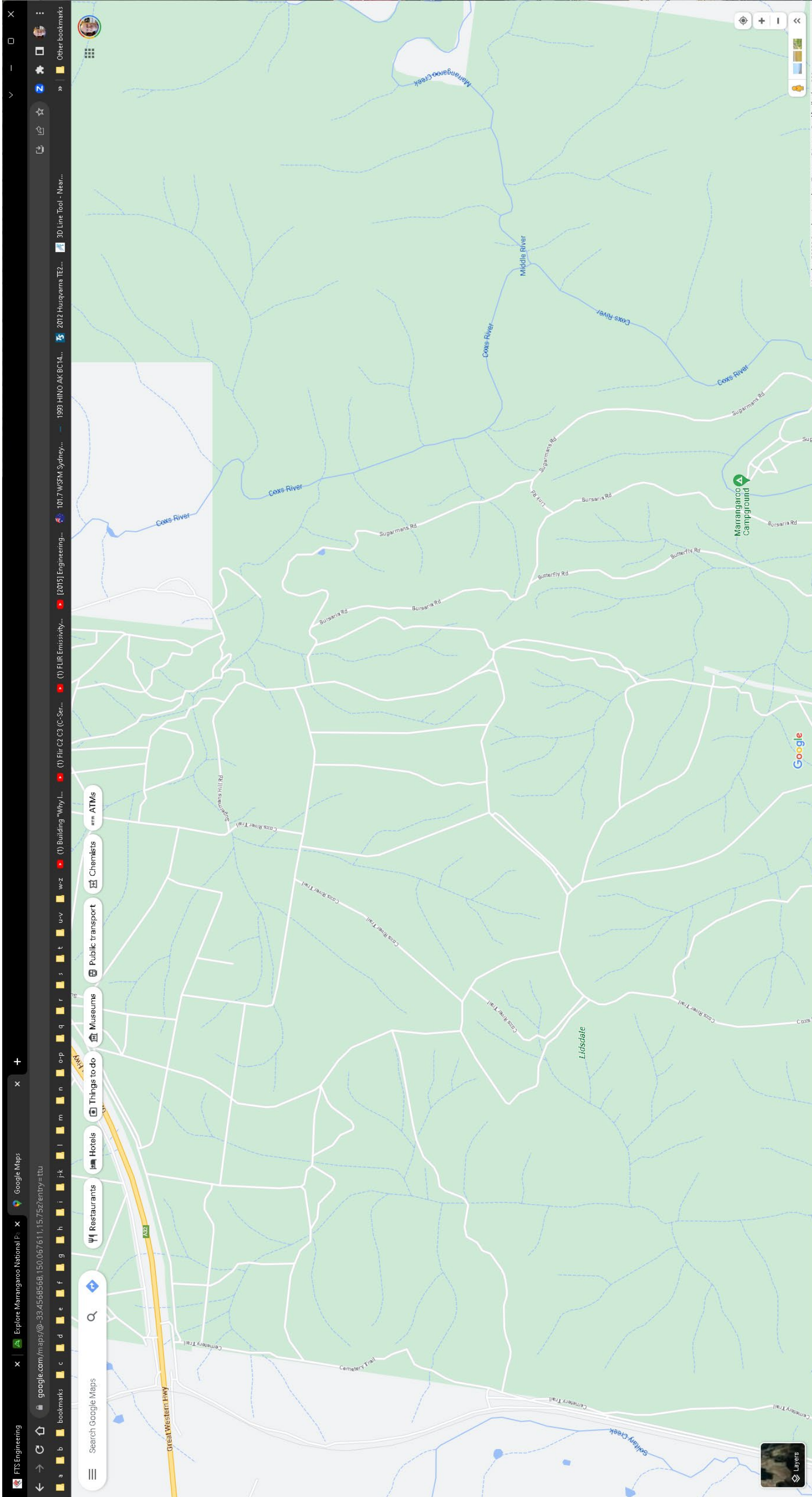










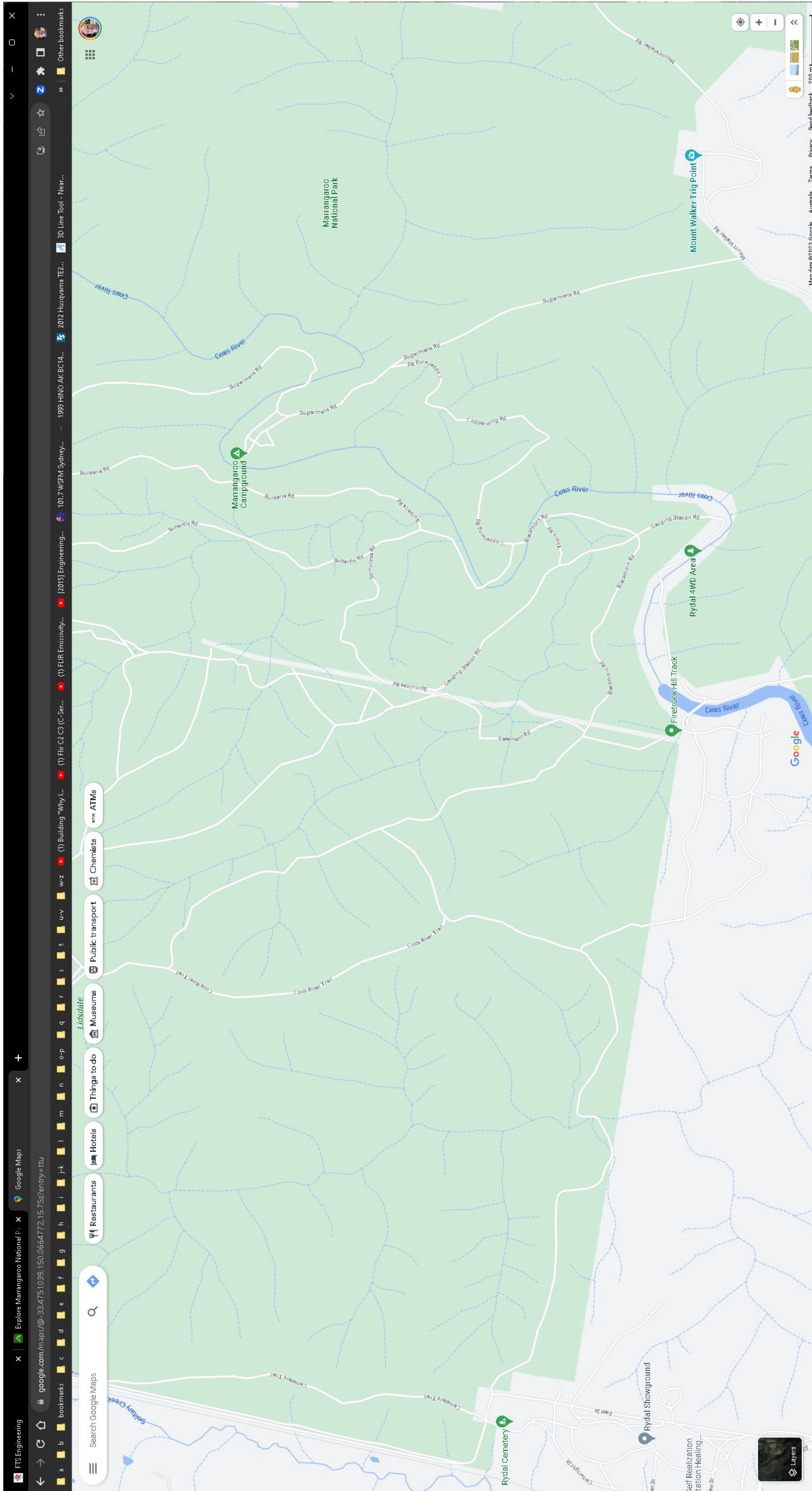


A3 Page Size: Details For Trax Trip to Marrangaroo Campground and Rylstone 4WD Recreation Area 12 to 13 August 2023





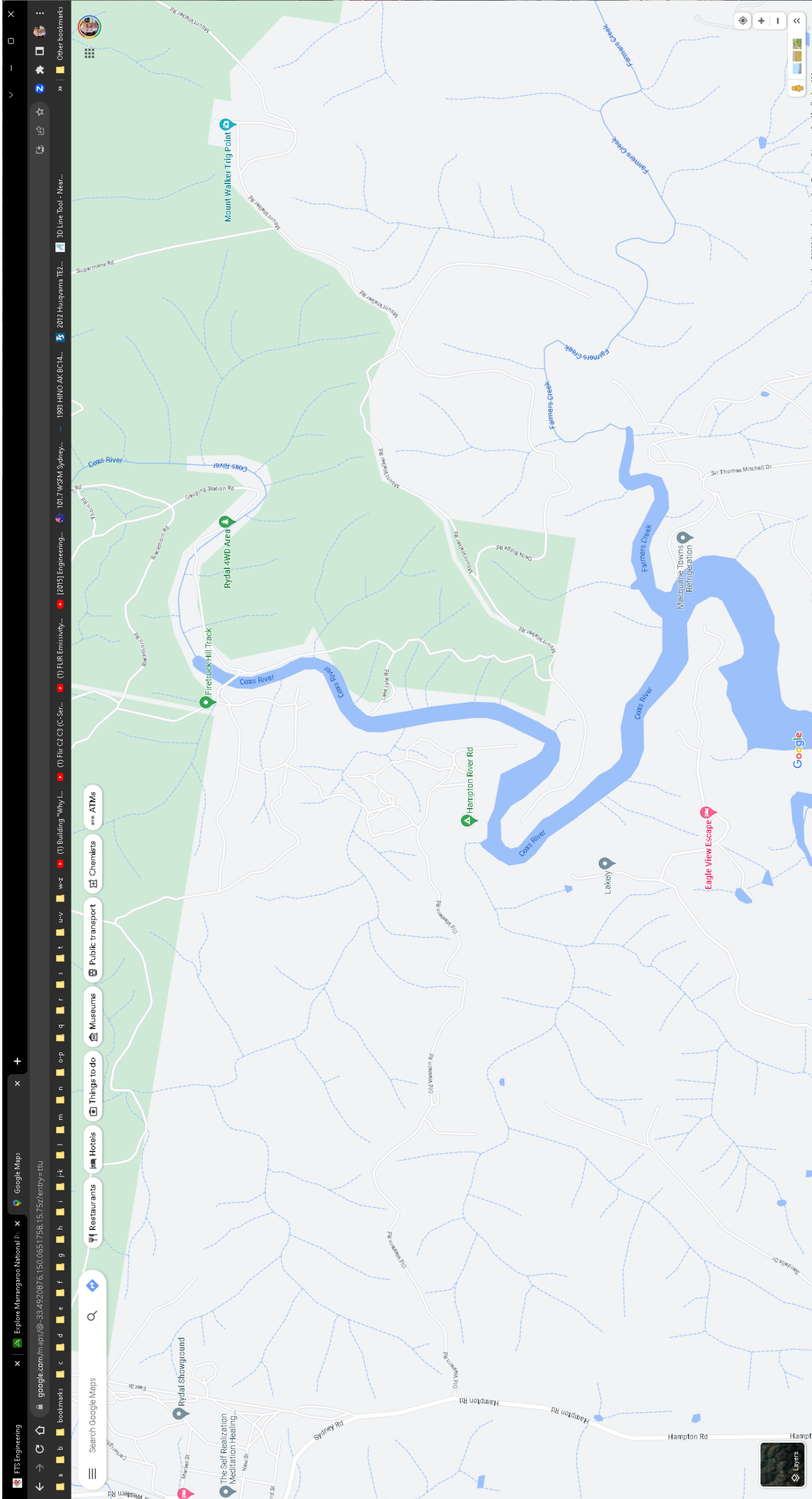




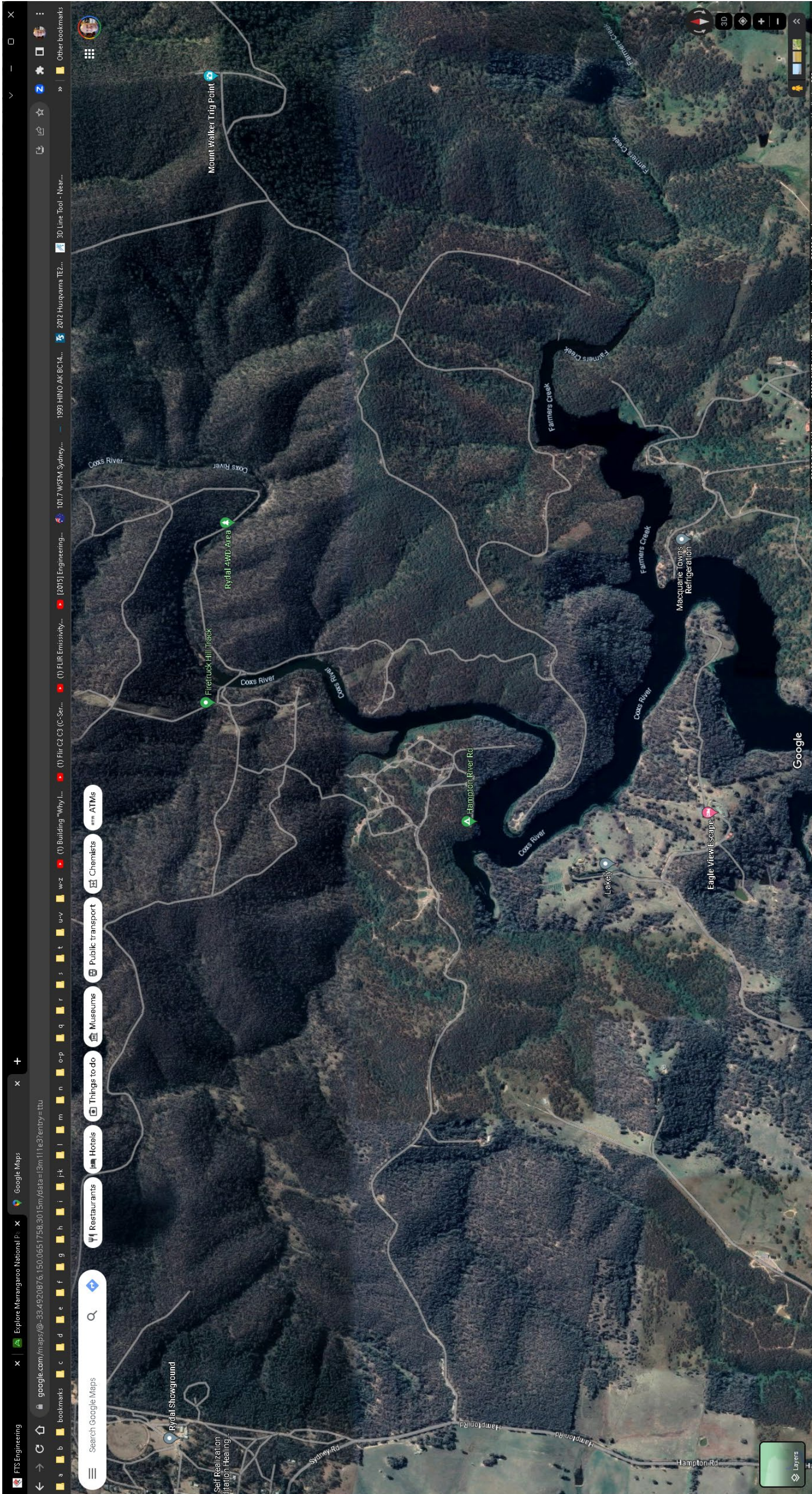




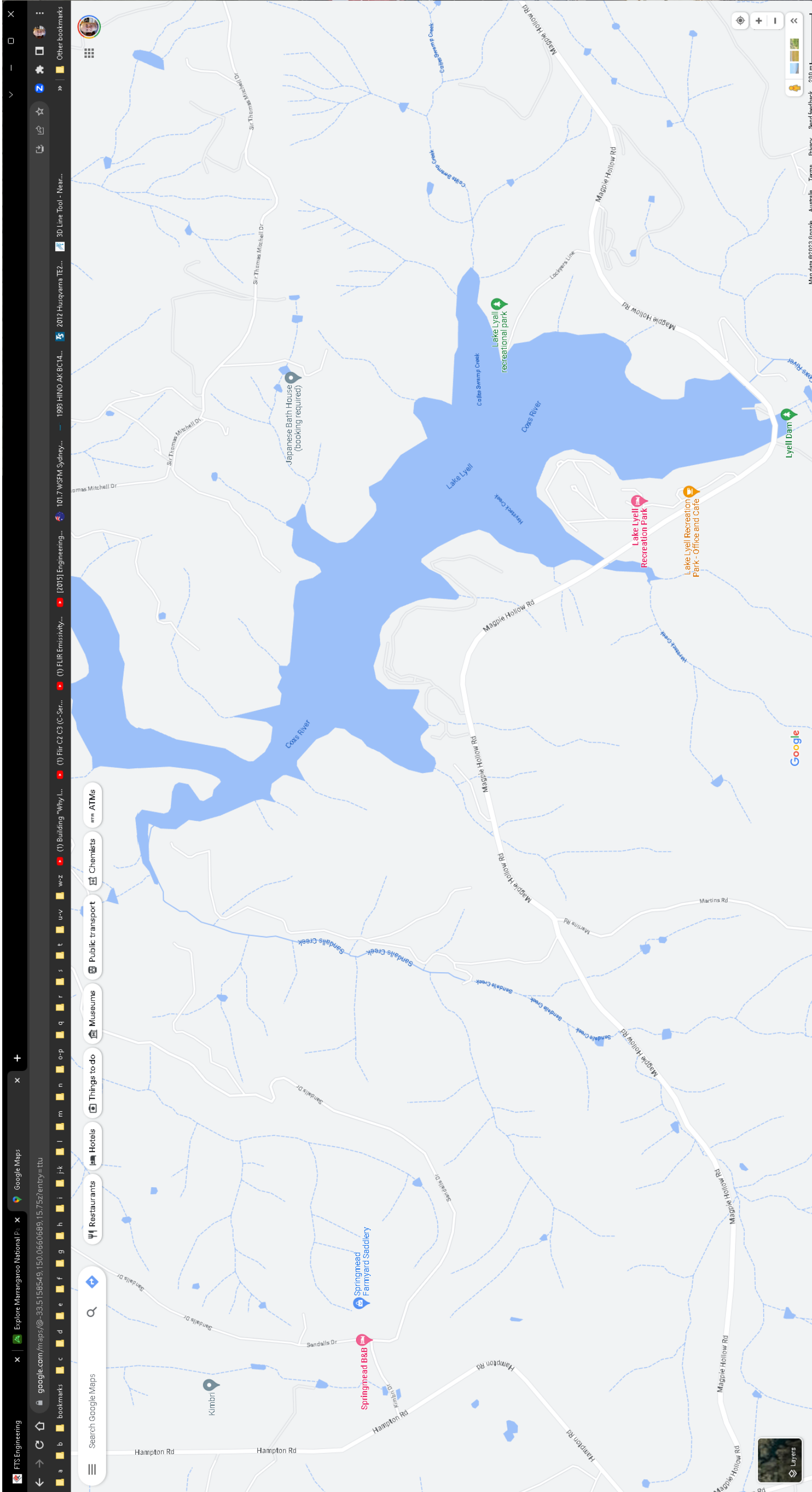








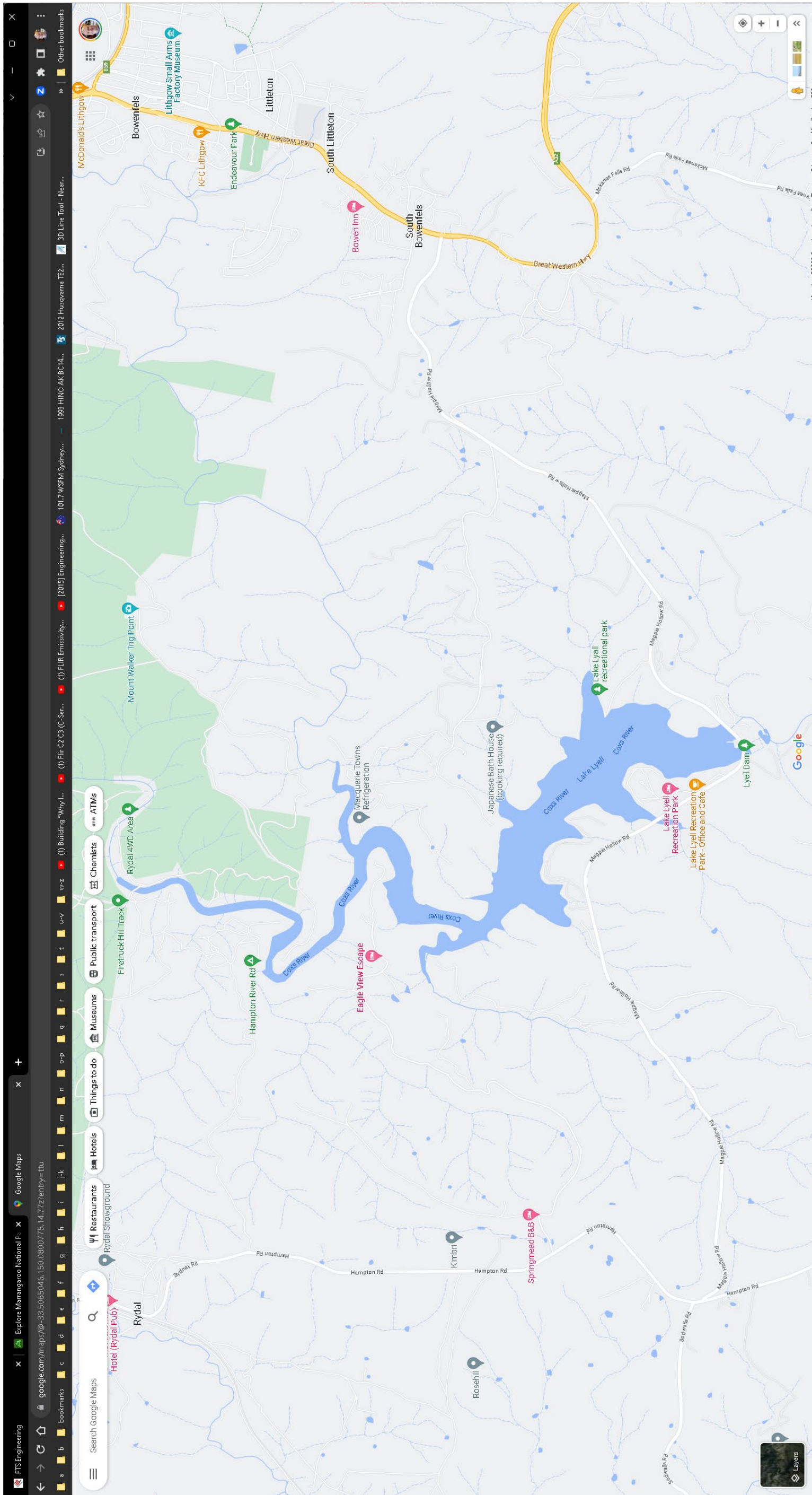




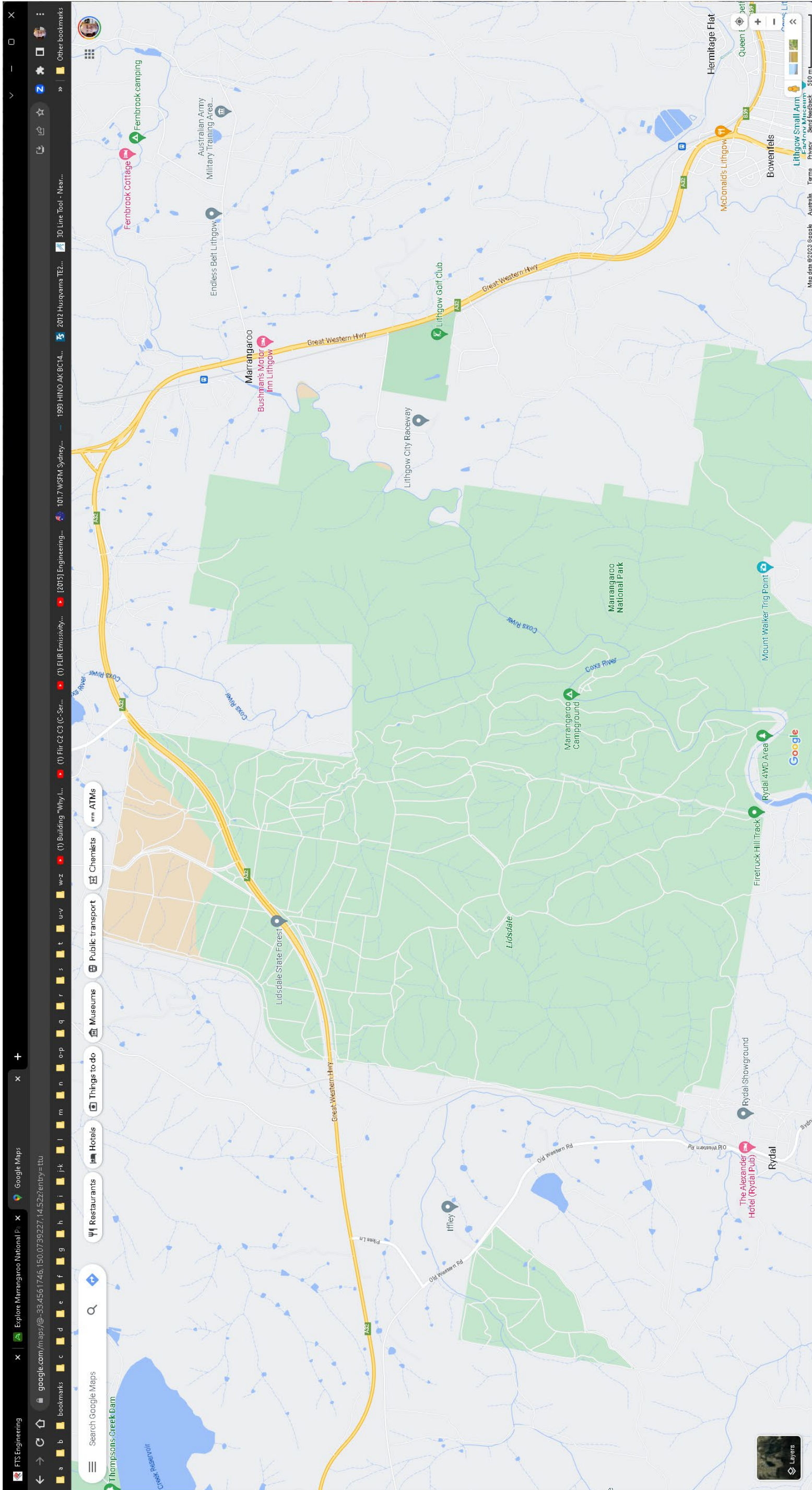












A3 Page Size: Details For Trax Trip to Marrangaroo Campground and Rylstone 4WD Recreation Area 12 to 13 August 2023



